

iBuildGreen
ECO SOLUTIONS

SPORTSFLOORING ROLLS

DATASHEET

www.ibuildgreen.se

CUSTOMER CARE COMES FIRST!

iBuildGreen is founded in 2017 by two ambitious entrepreneurs. They recognized that too often fitness flooring was seen as an afterthought, which lead to various issues such as:

- Missed opening dates because of untimely deliveries;
- Quality issues because of incorrect decisions on what product to lay in which area of the health club;
- Budget challenges because of significant overspending due to urgency;

Large European rubber flooring manufacturers were not organized to deliver smaller, steady supplies at the right quality and level service to an industry so specific with its demands and wishes as the fitness industry.

iBuildGreen differentiates its self by being able to deliver a vast range of high quality rubber floor coverings, directly from stock, at a competitive level!

We also pride ourselves in the fact that we contribute significantly to the circular economy; our rubber products consist almost exclusively of recycled car and truck tires.

We stock products such as:

- Sportsflooring by roll
- Fitness tiles
- SBR playground tiles
- Various rubber granulate underlay solutions
- Tile carriers
- Anti-slip mats for load securing
- Foam from recycled mattresses
- Various other technical products made from crumb rubber and/or vulcanized rubber

VISIT US www.ibuildgreen.se

CONTACT US info@ibuildgreen.se





TABLE OF CONTENTS

I.	THICKNESS & COLOURS	02
----	---------------------	----

II.	SPORTSFLOORING ROLLS	04
-----	----------------------	----

III.	INSTALLATION & CLEANING	06
------	-------------------------	----

IV.	BENEFITS	08
-----	----------	----

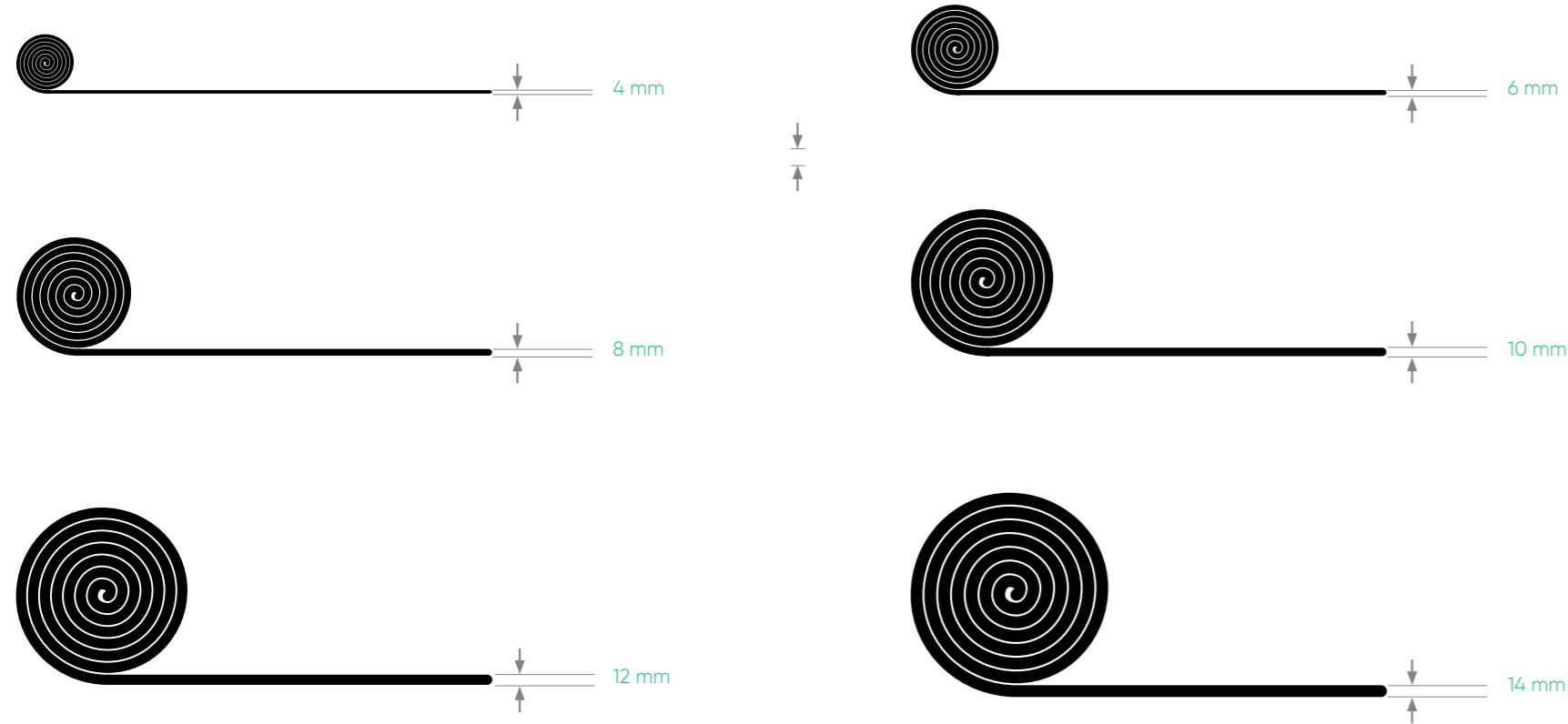
01.	PURE BLACK FIVE CLASSIQ	10
-----	-------------------------------	----

02.	OUR COLOUR RANGE	12
-----	------------------	----

I. THICKNESS & COLOURS

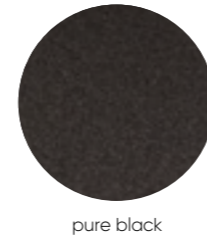
Our roll flooring is available in a suitable thickness for every purpose. From as thin as 4 mm all the way up, in 2 mm increments, to 14 mm. Our standard roll width is 1.25 meters

THICKNESSES



OUR COLOURS

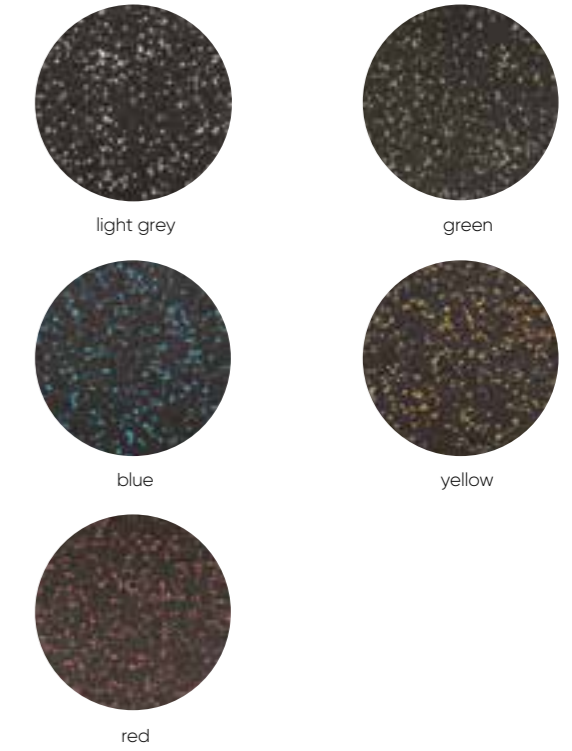
PURE BLACK



FIVE



CLASSIC



II. SPORTSFLOORING ROLLS

From 4 mm Cardio training, spinning, physiotherapy, yoga, exhibition, as substrate protection etc.

From 6 mm Fitness studio, aerobic, shooting range

From 8 mm Functional training, Martial Arts

From 10 mm Ice rink, mountain / cable car station, ski rental, free weight areas medium weights

From 12 mm Free-weight areas heavy weight, cross training

The sportsflooring rolls are manufactured from predominantly recycled black rubber crumb from truck tires, the coloured options have a percentage of new EPDM added to the mix. As a result of exclusively using truck tires this flooring has a very fine and smooth surface.

Our highly compact and maximally robust rubber floor covering is immune to moisture and water, rot proof, elastic, insulates against impact sound and is suitable for a wider range of applications:

Exhibitions, trade fairs and booths, fitness centres, crossfit boxes, leisure rooms, sports centres, cloakrooms, ice rinks, mountain stations, firing ranges, horse carriers, etc.spaces of golf courses.



III. INSTALLATION & CLEANING

SUBFLOOR

The surface must be smooth, level (levelled) and clean/dry.

PREPARATION

- When rolling out the rubber rolls, they will curl up at the ends. We therefore recommend leaving the rolls at room temperature for a few hours (ideally 24h) before final laying and cutting to allow the surface to acclimatise.
- Underfloor heating must be turned off 24 hours before installation and must only be turned back on after the adhesive has cured.

GLUE TO THE SUBFLOOR

For complete surface adhesion and due to characteristic roll tensions, we recommend gluing the rubber to the substrate. In this case, the glue manufacturer's specific adhesive recommendations should be followed.

If you have any doubts about the substrate or areas of application, please contact the relevant adhesive manufacturer directly. Head joints and seams should be fixed where necessary.

If the joints are coming up after glueing the roll down, it is recommended to place some weight on the joint to keep it down until the glue is fully cured.



CUTTING

The material can be cut using a sharp knife or a carpet knife.

CLEANING

To prevent excessive dirt on the floor, we recommend installing dirt traps at entrances. Keep the floor free of oil, petrol and acids. The floor is best cleaned with a damp cloth or mop. In addition, regular sweeping or vacuuming is sufficient. Slightly adhering dirt can be removed with a damp cloth. Heavier dirt can be cleaned with a mild detergent or mild soap dissolved in water. Always clean with clean water afterwards.

Stains must be removed as soon as possible because certain substances can react with the surface. After this, these stains are very difficult to remove, or can no longer be removed at all. We always advise to contact a professional party for cleaning the floors. No claims can be accepted when unauthorized cleaning products are used.

REMARKS

Although highly compressed, it can still absorb slightly porous surface liquids. So, depending on the application, for hygienic reasons and to simplify cleaning, a 2-K PU waterproof sealant or hardwax can be applied to the installed floor covering using a suitable coating roll.

IV. BENEFITS



HIGH DENSITY



EUROPEAN MANUFACTURED



100% RECYCLED RUBBER USED



ODOURLESS

01. PURE BLACK • FIVE • CLASSIQ

DIMENSIONS

Thickness	4 mm • 6 mm • 8 mm • 10 mm • 12 mm • 14 mm
Roll width	1.250 mm
Roll length	As required
Tolerances	width ± 1,5 % • length ± 1,5 %

MATERIAL PROPERTIES

- Tough elastic
- high compression resistance and impact strength
- skid and spike resistant
- non-slip high abrasion resistance
- comfortable
- noise insulating.

COMPOSITION

PURE BLACK	SBR rubber granules bonded with PUR
FIVE	SBR and EPDM rubber granules bonded with PUR
CLASSIQ	SBR and EPDM rubber granules bonded with PUR

SPECIFICATIONS

Bulk density	Approx. 980 kg/řh	
Ultimate tensile strength	EN 12230 pure black EN 12230 five/classiq	1.8 N/mm ² elongation at break: 98 % 1.8 N/mm ² longation at break: 118 %
Compression	EN 12230 10 mm	9% DVR with a compression of 25%
Max. compression	EMPA AT 5N/mm ² 12 mm:	2.32 mm without visible damage
Shock absorption	EN14904 6 mm 15,7 % • 8 mm 17,4 % • 10 mm 18,5 % • 12 mm 21,0 %	
Temperature stability	30° C to +80° C in resting condition -120° C and for short periods up to +300° C)	
Dimensional change after heat exchange	EN 434 pure black Longitudina EN 434 classiq Longitudina	0.15 % • Across 0.0 % • Warping 0 mm 0.25 % • Across 0.0 % • Warping 0 mm
Thermal conductivity	EN 12230	0.17 W/(mK)
Fire behaviour	EN 13501	E _{fl} - S2
Sound improvement	EN ISO 10140	6 mm 17 dB • 8 mm 18 dB
Anti slip property	DIN 51130 DIN 14041	Class R10 Class DS
Dynamic coefficient of friction	EN 13893	μ 0.57
Electrical properties	EN 1815	-0.7 kV (antistatic)
Additional specifications	Static stiffness Dynamic stiffness	at a maximum load of 8 kN (evaluation)* at average loads from 0.4 to 4 kN and frequencies from 5 to 40 Hz (evaluation)*
	Vapour diffusion Chemical behaviour EN 423	Vapour permeable Resistant to water, numerous diluted acids and alkaline solutions
	Chically neutral • UV-resistant	
	*charts available upon request	

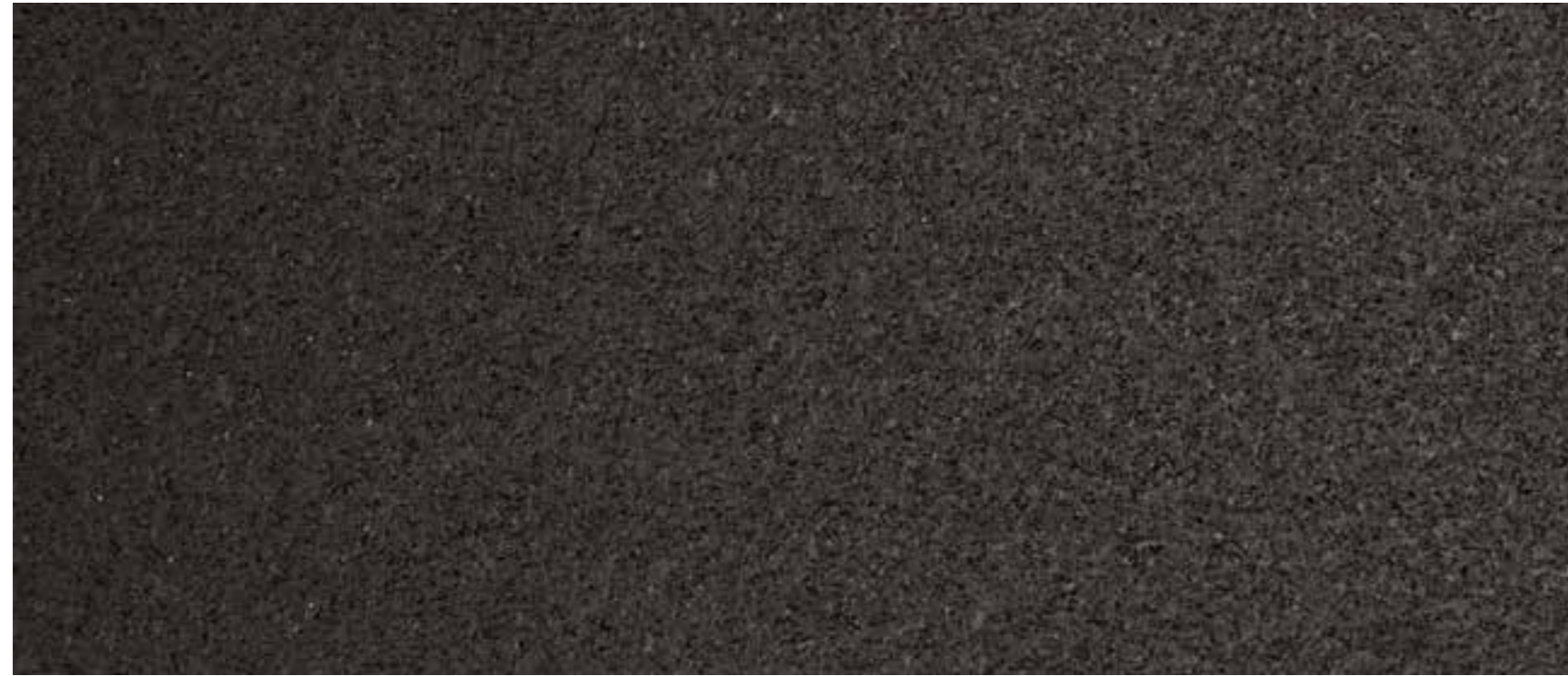


Sports Place (Münster, Germany)
FIVE 5% light grey

03. OUR COLOUR RANGE

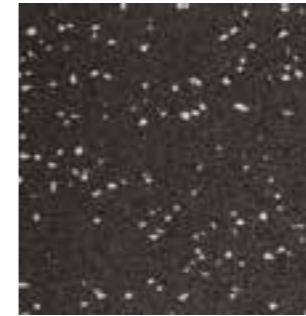
PURE BLACK

SBR rubber granules bonded with PUR

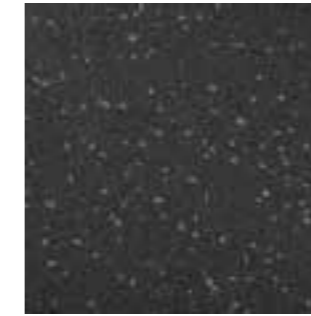


FIVE

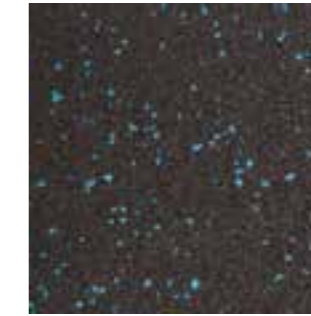
95% SBR and 5 % EPDM rubber granules bonded with PUR



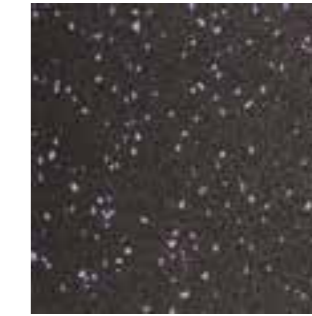
light grey



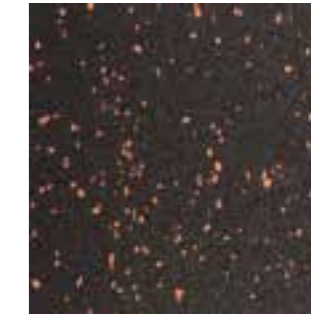
dark grey



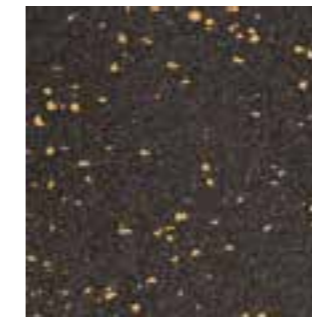
blue



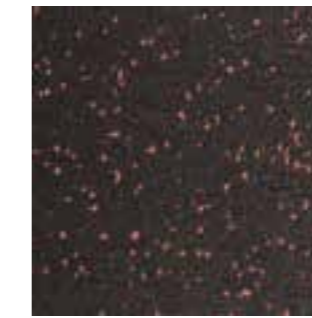
lila



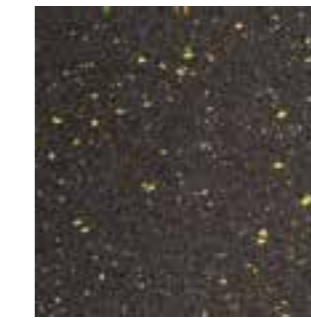
orange



yellow



red



samba



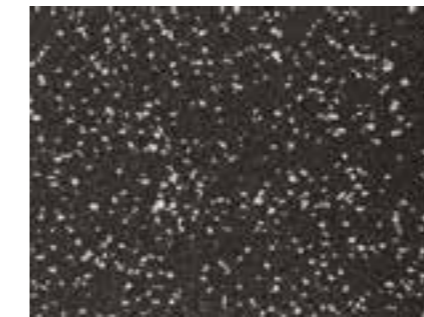
stars



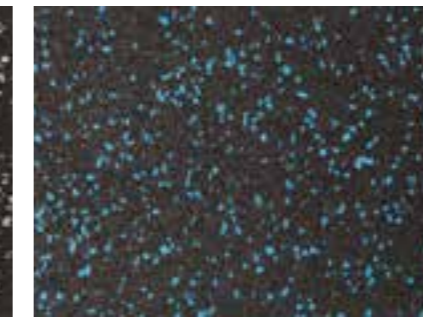
clever fit (Haltern am See, Germany)
CLASSIQ 20% light grey

CLASSIQ

80% SBR and 20 % EPDM rubber granules bonded with PUR



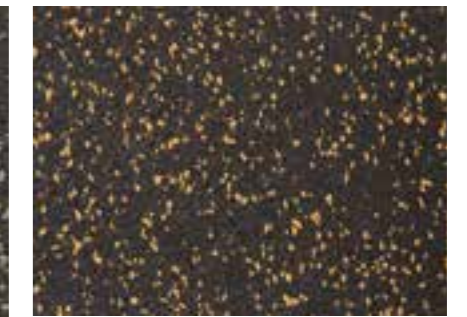
grey



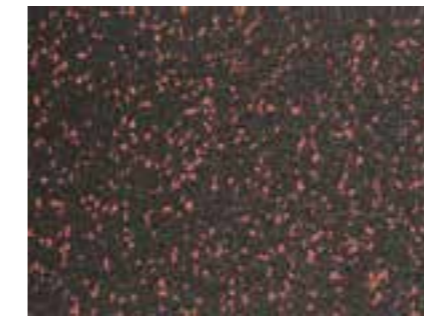
blue



green

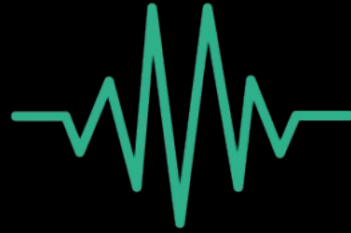


orange



red





iBuildGreen
ECO SOLUTIONS

THANK YOU